

Southern States University

Newsletter

FALL QUARTER



INDIVIDUAL HIGHLIGHTS:

1: Student Ambassadors

2: Student Highlight

3: Alumni Highlight

4: Upcoming Career Fairs

**5: Flash Info, Writing Classes,
Mentorship, Career Services**

6: New and Current Employees

7: Potluck

8: Calendar

9: Where to find all the information

10: New Campus SSU San Diego

11: Tutoring, MBA Online



Ambassadors

We want you to meet our new SSU Ambassadors. They represent SSU and participate in a variety of activities in the school. Their goal is honestly representing SSU through their personal perspective and assisting you in discerning how Southern States University could be the place for you to have a fulfilling and thriving career. As SSU Ambassadors, they are also dedicated to integrating and

educating students about the power and opportunity of a college education.

When you visit our campus, you will have the chance to meet them. Do you want to know more about them? So, Check their biographies on our website:

<http://www.ssu.edu/current-members/>



**STAY
CONNECT**

SOCIAL MEDIA

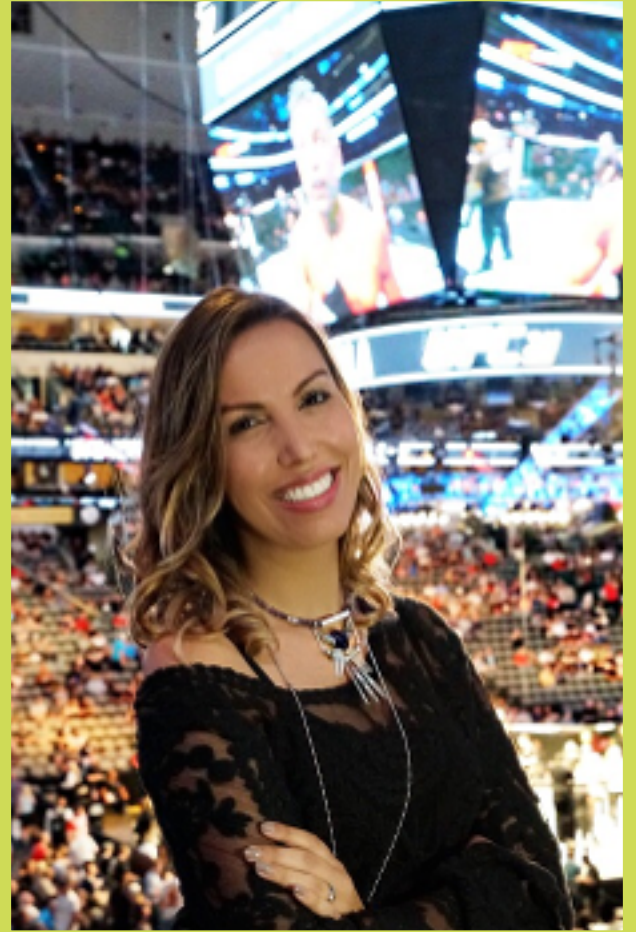
There are many ways to stay connected with us :



STUDENT HIGHLIGHT

Evelyn Rodrigues

Evelyn Rodrigues is a Brazilian journalist based in Las Vegas. She graduated in Journalism from Cásper Líbero College in 2004, but began her career as a trainee reporter for the newspaper "Diário de Osasco", in 2001. For years, she worked as a reporter and producer for TV and radio shows in Brazil. She has also developed a career in Corporate Communication, managing internal and external communication, corporate reputation, branding transition, and social media for over 15 years. In 2009, Evelyn moved to Las Vegas to improve her English at the IAE (International Academy of English). Since 2011, she works as an international correspondent for the Brazilian media in the US, covering combat sports. In fact, she was the first Brazilian female journalist to come to America to report mainly MMA and boxing fights. In 2013, she started working for Combate.com (the biggest MMA website in South America) interviewing some of the biggest personalities of boxing and MMA, such as Floyd Mayweather, Conor McGregor, Ronda Rousey, Georges St-Pierre, Anderson Silva, etc (the list goes on!). In november of 2016, Evy began her collaborations as a reporter for TV Globo International, covering subjects related to the Brazilian community in America. Today, she is one of our first students in the Las Vegas Campus doing the MBA in Business Administration program.



"I am confident that this course will bring me to the next level in my career, wherever it might be"

"Learning a new language in another country and starting a new career was one of the biggest challenges I overcame in my life. However, I still wanted to challenge myself. Once more I wanted to leave my comfort zone to keep improving as a professional and opening new opportunities for my life. That's why I am doing the MBA in Business Administration at SSU. I am confident that this course will bring me to the next level in my career, wherever it might be", Evelyn Rodrigues

Twitter and Instagram: @vevyrodrigues

ALUMNI HIGHLIGHT

Mohammad Alhasan

"Mohammad is of a Palestinian descent and grew up in Aleppo, Syria. He received his B.S. in Electrical Engineering from Jordan University of Science and Technology in 2010. After graduating, he moved to San Diego, California to pursue higher education, where he earned an MBA from Southern States University in 2014. He is now working as a software test engineer at Qualcomm. In July 2016, considering the resettlement of 300 refugee families in San Diego, Mohammad joined forces with other activists to form the Arab Youth Collective (AYC), a community-based collective with the purpose to facilitate the integration process of recently resettled refugees. With the partnership of Corazon de Vida, Mohammad started AYC's coding program to introduce 11 to 14-year-old children to coding concepts through simple computer-based games. Mohammad is very engaged in his community and his philanthropic work continues to expand. In 2017, he joined Get Charged Up (GCU), a nonprofit with a mission to empower underserved communities through energy access and education while protecting the environment. At GCU, Mohammad leads the #EmpowerRefugees initiative facilitating training for young refugee adults in solar panel installations and increasing their prospects for employment in a leading and sustainable industry. Mohammad enjoys traveling and exploring different cultures. His latest memorable adventure was in South America last year where he explored several countries below the equator for the first time.



"My latest memorable adventure was in South America last year where I explored several countries below the equator for the first time."

Mohammad enjoys traveling and exploring different cultures.

[Links of videos about his project:](#)

Coding program with AYC:

Check it out here :



#EmpowerRefugees with Get Charged Up:

Check it out here:



OCTOBER CAREER FAIRS



San Diego Campus

**Thursday, October 26,
2017**

11:00 AM to 2:00 PM

Handlery Hotel San Diego 950
Hotel Circle North
San Diego, CA 92108

For more information:

www.choicecareerfair.com

Newport Beach Campus

Tuesday, October 18, 2017

1:00 PM to 5:00 PM

Radisson Hotel Los Angeles
Midtown at USC
3540 S Figueroa St
Los Angeles, CA 90007

For more information:

info@hgplus.com

Las Vegas Campus

**Tuesday, October 24,
2017**

9:30 AM – 1:00 PM

Springhill Suites Hotel
2989 Paradise Road
Las Vegas, NV 89109

For more information:

www.talentcareerfairs.com

**Our Career Service is at your disposal
to help with your resume**

NOVEMBER CAREER FAIRS



HireLive

BestHire[®]
career fairs

Choice
CAREER FAIRS

San Diego Campus

Newport Beach Campus

Las Vegas Campus

**Tuesday, November 8,
2017**

09:00 AM to 12:30 PM

2725 Palomar Airport Road
San Diego - North, CA

For more information:

www.hirelive.com

**Thursday, November 2,
2017**

11:00 AM to 2:00 PM

Hyatt Regency
200 South Pine Ave.
Long Beach, CA 90802

For more information:

www.besthirecareerfairs.com

**Wednesday, November
24, 2017**

11:00 AM to 2:00 PM

Texas Station Casino & Hotel
2101 Texas Star Ln.
N. Las Vegas, NV 89130

For more information:

www.choicecareerfairs.com

**Our Career Service is at your disposal
to help with your resume**

DECEMBER CAREER FAIRS



San Diego Career Fair

Newport Beach Campus

Las Vegas Campus

**Thursday, December 6,
2017**

09:00 AM to 12:30 PM

601 Pacific Highway
San Diego - South, CA

For more information:

www.hirelive.com

**Tuesday, December 12,
2017**

11:00 AM – 2:00 PM

Clarion Hotel Anaheim Resort
616 W Convention Way
Anaheim, California 92802

For more information:

www.nationalcareerfairs.com

**Thursday, December 14,
2017**

11:00 AM – 2:00 PM

Palace Station Hotel
2411 West Sahara Avenue
Las Vegas, NV 89012

For more information:

www.nationalcareerfairs.com

**Our Career Service is at your disposal
to help with your resume**



MOCK INTERVIEW

Mock interview will not only help you perfect your technique, but it will also allow you to get valuable feedback and coaching on your performance.

PRONUNCIATION CLASS

Pronunciation is very much a “must” skill for any English language learner. Come in and join us!

COMPANY TOURS

SSU invites you to enjoy a tour in successful companies every month.

Next tours: Check on the Calendar

MENTORSHIP

Most successful people give credit to their mentors for their accomplishments.



YVAN NEZERWE

San Diego Campus
ynezerwe@ssu.edu



PEGGY BILBRUCK

Newport Beach Campus
pbilbruck@ssu.edu



BILL DOYLE

Las Vegas Campus
bdoyle@ssu.edu

. San Diego Campus

Where: Library

Day/Time: Thursdays, 1-3 pm

Contact: Cynthia Mock

. Newport Beach Campus

Where: On Campus

Day/Time: Fridays, 9-11 am

Contact: Beate Berg

. Las Vegas Campus

Where: On Campus

Day/Time: Thursdays, 3-5 pm

Contact: Bill Doyle



CAREER SERVICES

The Southern States University Career Center is here to assist you in looking for employment. There are a number of services and workshops available including: resume building, linked in creation, interview techniques, job hunting, and career guidance. You can contact the career center director (Cynthia Mock) by appointment at cmock@ssu.edu.

NEW EMPLOYEES

JONATHAN RAMIREZ

jramirez@ssu.edu

Dean of Admissions and Academic Advisor at San Diego Campus

Jonathan Ramirez is the Director of Admissions and Advising who helps SSU students plan and prepare to successfully complete their academic goals.

Jonathan received his graduate training at Point Loma Nazarene University in San Diego, where he earned M.A.Ed. in Counseling and Guidance.



KIMI HO

kho@ssu.edu

Academic Advising and Support Officer at Newport Beach Campus

Born and raised in Germany, Kimi came to the U.S. to pursue his undergraduate degree. He graduated with a Bachelor's in Business Administration from California Polytechnic University Pomona with emphasis in Finance and Real Estate. He has worked in several industries such as in aviation and banking to finally find himself in the educational sector. Kimi was managing a Language Institute before starting at Southern States University as Academic Advising and Support Officer.

CURRENT EMPLOYEES

Chancellor

John Tucker

jtucker@ssu.edu

Vice chancellor, Academic Affairs/Chief Academic Officer

Claudia Araiza

caraiza@ssu.edu

University Registrar/DSO

Wendy Du

wdu@ssu.edu

University Librarian & Career Services Coordinator

Cynthia Mock

cmock@ssu.edu

University Bursar (Fashion Valley Campus)

Lisiane Lambe

llambe@ssu.edu

Site Director Las Vegas Campus

Bill Doyle

bdoyle@ssu.edu

Site Director Newport Beach Campus

Beate Berg

bberg@ssu.edu

IT Specialist

Pavlo Fedotov

pfedotov@ssu.edu

IT Assistant/Campus Café Coordinator

Gautami Verma Gajula

gverma@ssu.edu

DO NOT HESITATE TO CONTACT US.

Potluck



Last week , the Southern States University Team organized a Potluck, on San Diego Campus and Newport Beach Campus. It was awesome!

The goal of this Potluck was to welcome the new SSU students, and help them get closer to each other.

We also invited some representatives (Bank of America, AT&T, and Farmers Insurance) to provide them their services. If you need it, do not hesitate to ask their business card at the front desk.

Thank you to the students and representatives for coming. We really appreciate! Southern States University Team wish them good luck for their first quarter :)

WELCOME NEW SSU STUDENTS

OCTOBER

SAVE
THE
DATES

- : San Diego Campus

All the workshops will be
at 4pm in Room 318

- : Newport Beach Campus

All the workshops will be
at 2pm in Room B

- : Las Vegas Campus

| Monday | Tuesday | Wednesday | Thursday | Friday | Saturday | Sunday |
|------------------------------|--|-------------------------------|---|--|----------------------------|---|
| 2 Orientation Week | 3 San Diego Potluck | 4 Newport Beach Potluck | 5 | 6 | 7 | |
| 9 First day of classes | 10 Career Fair | 11 National Career Fair | 12 -Writing Class -Writing Class | 13 Writing Class San Diego Gulls Vs. Texas Stars | 14 | |
| 16 | 17 -APA Formatting -Pronunciation Class | 18 | 19 -APA Formatting -Writing Class | 20 Writing Class Microsoft Workshop | 21 Hot-Dog Beach Day | 22 Enrique Iglesias & Pitbull concert |
| 23 | 24 - Word Features for APA Formatting -Pronunciation Class Career Fair | 25 | 26 -Word Features for APA Formatting -Writing Class -Writing | 27 Writing Class | 28 | |
| 30 | 31 Using Information -Pronunciation Class Halloween Party | | | | | |

NOVEMBER

SAVE
THE
DATES

- : San Diego Campus

All the workshops will be
at 4pm in Room 318

- : Newport Beach Campus

All the workshops will be
at 2pm in Room B

- : Las Vegas Campus

| Monday | Tuesday | Wednesday | Thursday | Friday | Saturday | Sunday |
|--------|--|-------------------------------|--|------------------------|-----------------------------------|--|
| | | 1 | 2 -Using Information -Writing Class -Writing Class | 3 Writing Class | 4 | 5 |
| 6 | 7 -APA Formatting -Pronunciation Class | 8 | 9 -APA Formatting -Writing Class -Writing Class | 10 Writing Class | 11 | 12 |
| 13 | 14 -Understanding Databases and Finding Company Data -Pronunciation Class | 15 | 16 -Understanding Databases and Finding Company Data -Writing Class -Writing Class | 17 Writing Class | 18 SSU Hot-Dog Beach Day | 19 San Diego Socks Vs. Ontario Fury |
| 20 | 21 -Pronunciation Class | 22 Thanksgiving Potluck | 23 Thanksgiving | 24 | 25 | 23 |
| 27 | 28 -Power Point -Pronunciation Class Guns N' Roses concert | 29 | 30 -Power Point -Writing Class -Writing Class | | | |

DECEMBER

SAVE
THE
DATES

- : San Diego Campus

All the workshops will be
at 4pm in Room 318

- : Newport Beach Campus

All the workshops will be
at 2pm in Room B

- : Las Vegas Campus

| Monday | Tuesday | Wednesday | Thursday | Friday | Saturday | Sunday |
|--------|---|---|---|------------------------|-------------------------------------|--------|
| | | | | 1 Writing Class | 2 | 3 |
| 4 | 5 -Resume Building -Pronunciation Class | 6 | 7 -Resume Building -Writing Class | 8 Writing Class | 9 | 10 |
| 11 | 12 Pronunciation Class | 13 San Diego Gulls vs. Stockton Heat | 14 -Writing Class -Writing | 15 Writing Class | 16 End of the Fall Quarter | 17 |
| 18 | 19 Jay-Z Concert | 20 | 21 | 22 | 23 | 24 |
| 25 | 26 | 27 | 28 | 29 | 30 | 31 |

Where to Find all of The Information

WEBSITE

- **Events:**

<http://www.ssu.edu/news-events/events/>

- **Career Services:**

<http://www.ssu.edu/resources/career-services/>

- **Lunch Talk:**

<http://www.ssu.edu/?s=lunch+talk>

- **Working In the US (F1 Visa):**

<https://studyinthestates.dhs.gov/working-in-the-united-states>

- **Optional Practical Training (OPT);**

<http://www.ssu.edu/resources/student-services/optional-practical-training/>

- **Curricular Practical Training (CPT);**

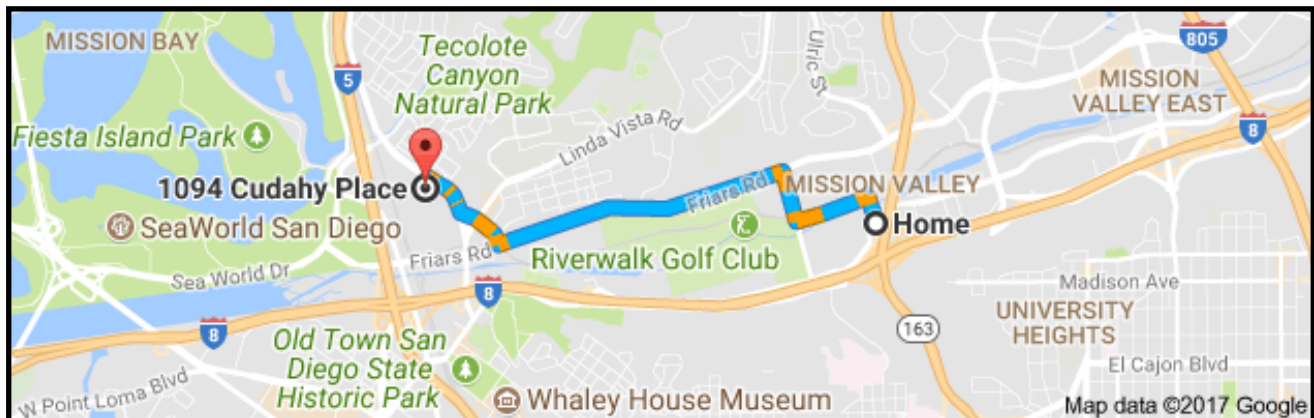
<http://www.ssu.edu/resources/student-services/curricular-practical-training/>

SOCIAL MEDIA



NEW CAMPUS LOCATION IN WINTER 2018 FOR SSU SAN DIEGO

In the next couple of weeks, the San Diego Campus will begin preparing its move to a new location in the Mission Valley area, only 2.7 miles away from its current location. The move is a result of construction changes on 123 Camino De La Reina as all buildings in that area will be torn down to make way for residential apartment buildings. SSU San Diego's new location will be fully operational the first week of January 2018 for the start of the winter quarter. The new address will be: 1094 Cudahy Place, San Diego, CA 92110.



1094 Cudahy Place, San Diego, Ca 92110

SOCIAL MEDIA



TUTORING:

We're offering Tutoring classes on campus. If you need any support, we can help you. Come to the front desk and just let us know which class you're interested in.

Want to be a Tutor?

Be a volunteer for the Student Tutoring Program and/or faculty classroom assistance. GPA must be above 3.5. Students volunteering in the Student Tutoring Program will be considered for on-campus employment, when available. You will also receive a formal SSU "participation certificate".

MBA ONLINE

Do you know that we have a full MBA Online?

MBA ONLINE: \$4950

If you want to have more information, contact us.

THANK YOU

**Thank you so much for your support and
patience during the Campus Cafe
implementation phase.**